

Helvetass Swiss Intercooperation Albania /DLDP



**“Recycling and waste
standards in Lezha”**



***“Expand separation at source
and differentiated waste
collection system in Lezha”***

Waste management system in Lezha

Population: 28,147

Zone A: 12.922

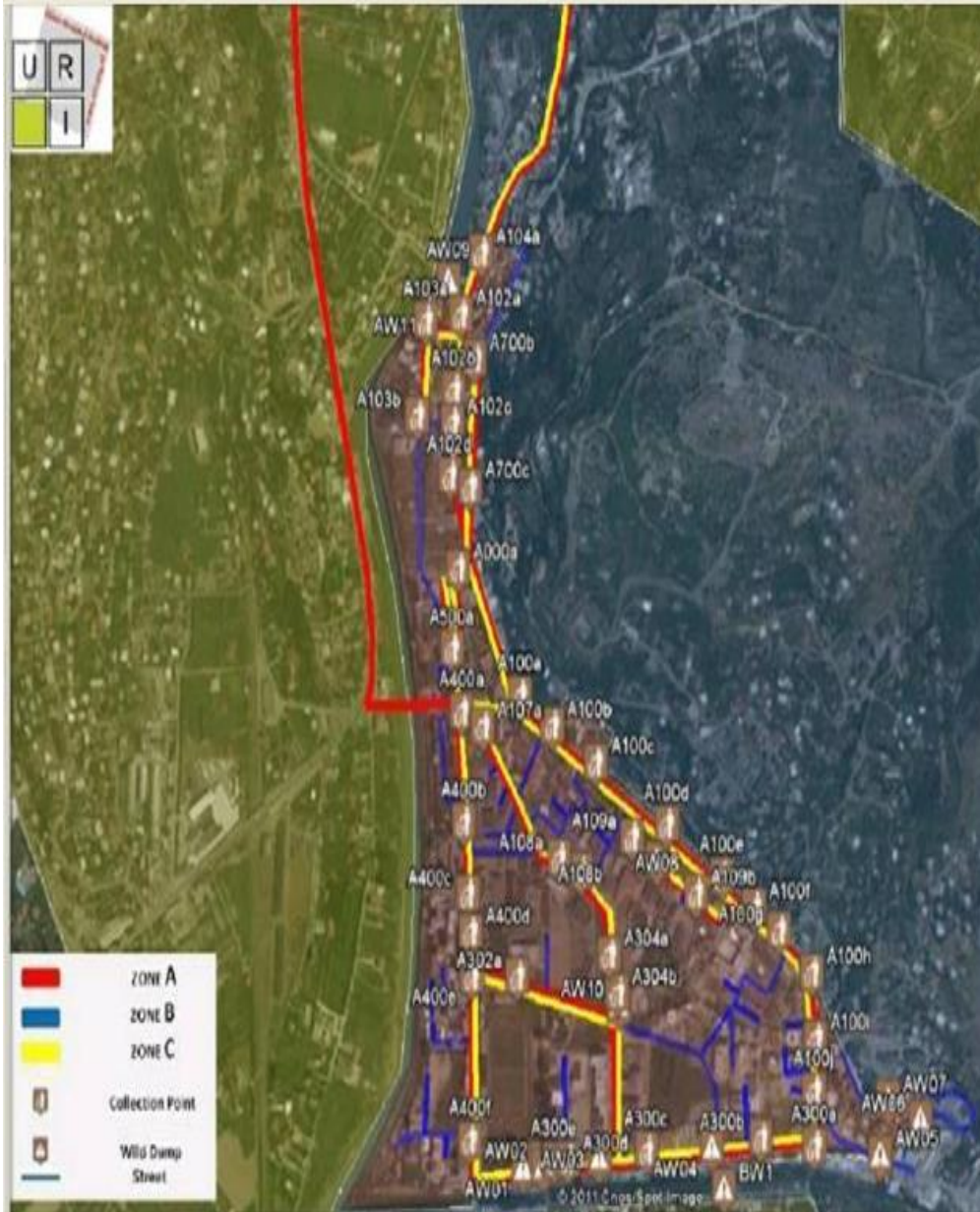
Zone B: 9.799

Zone C: 5.446

System:

- two stream waste collection system which expands over Zone A of service ,
- The system implies the use of :
 - 100 containers of 1,1 m3 ,
 - 50 containers of 3,2 and 1,6 m3
- A sorting center the further selection of recyclable waste





Waste amount

Agregate 2013

Zone name	Bio. waste (t/day)	Recycl. Waste (t/day)	Total by Zone (t/day)
Zone A	3	2,6	5,6
Zone B	2,6	2,3	4,9
Zone C	2	1,7	3,7
Lezhe	7,6	6,6	14,2

Recycling recovery	Kg/day	Ton/yea d amount	% to the calculate
Total	1450	530	10%
Zone A			56%

Objective of the proposal

- Apply alternative and inovative methods to expanding waste separate collection and differentiation at the source to covering the whole territory of the municipality of Lezha,
- Further reduction of waste amount transported and disposed at the landfill of Bushat,

Methodology

- support community mobilization and social inclusion as part of the integrated waste management scheme
- pilot to expand differentiated collection of recyclable waste
- Calculate costs and design a standard for waste management applicable at LG level

Proposed activities

- a. Door – to – door collection of recyclable waste
- b. Implementation of cost and tariff model,
- c. pilot waste standards and benchmarking

Door – to – door collection of recyclable waste

- Expand mainly to the population leaving in the rural alike parts of the municipality of Lezha to start with covering 80 % of Zone C



Multi-Material Fractions –
Mainly Plastic, Glass, Metal

Zone Name	# of Habitants	# of Households
Zone C	6.228	1.634
% to the total	21%	

Zone	Recycl (t/day)	Recovery (%)	Recovery Ton/dite
Zone C	1,7	40%	0,7

Name of Zone	# of Households	# of pick ups / year	# blue bags/ year
Zone C	1.634	52	84.968

Implementation of cost and tariff model

- Calculation of cost for waste management in Lezhe Municipality will be based on dldp model,
- collect information involving central and local agencies
- Share and discuss final results with decision makers

Waste standards and benchmarking

- Design a waste management standard based on performance management , combining:
 - Input, output, outcome and citizen's satisfaction data,
- Design benchmarking system to include:
 - A set of main data that are easily measurable and reported , to combine:
 - Input, output, outcome and citizen's satisfaction data,

FALEMINDERIT



**Urban
Research
Institute**